



Villa Grébovka

Havlíčkovy sady 58, Praha 2 – Vinohrady

Table of Contents

03 About the Villa Grébovka

05 Our Facilities

06 Seminars and Conferences

07 Social Events and Concerts

08 Accommodations

10 The CEELI Institute

11 Directions

12 Contacts



About the Villa Grébovka

The Villa Grébovka is located inside the park "Havlíčkovy sady" in Prague 2. This magnificent neo-Renaissance villa was built as a summer residence for the industrialist Moritz Gröbe in 1871–1888. The house stands majestically on top of one of Prague’s historic royal vineyards.

The Villa was built in the Italian Renaissance Revival style, popular in Czech lands in the 1860s and 1870s. The dwelling was designed by Antonín Barvitius, and the interiors were designed by one of the greatest Czech architects of the 19th Century, Josef Schulz, who went on to design a number of Prague’s landmarks, including the Rudolfinum and the National Museum.







Our Facilities

The Villa Grébovka offers spaces for seminars, conferences, concerts, and other social or professional events.

The facilities include:

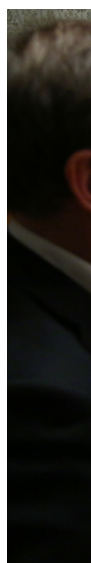
- 3 large classrooms/seminar rooms that can each accommodate up to 60 people in classroom format and 100 people in theatre format
- 7 breakout/seminar rooms for up to 25 people each
- Library and reading room
- Office space
- High-speed Wi-Fi throughout the building
- Outdoor terraces with spectacular views over Prague
- Dining room
- Fully equipped industrial kitchen





OUR FACILITIES

Seminars and Conferences





OUR FACILITIES

Social Events and Concerts



Double
rooms



Accommodations

The Villa offers residential space for up to 44 guests (6 double rooms and 32 single rooms). We also offer an on-site fitness center.



Single
rooms



Fitness
center



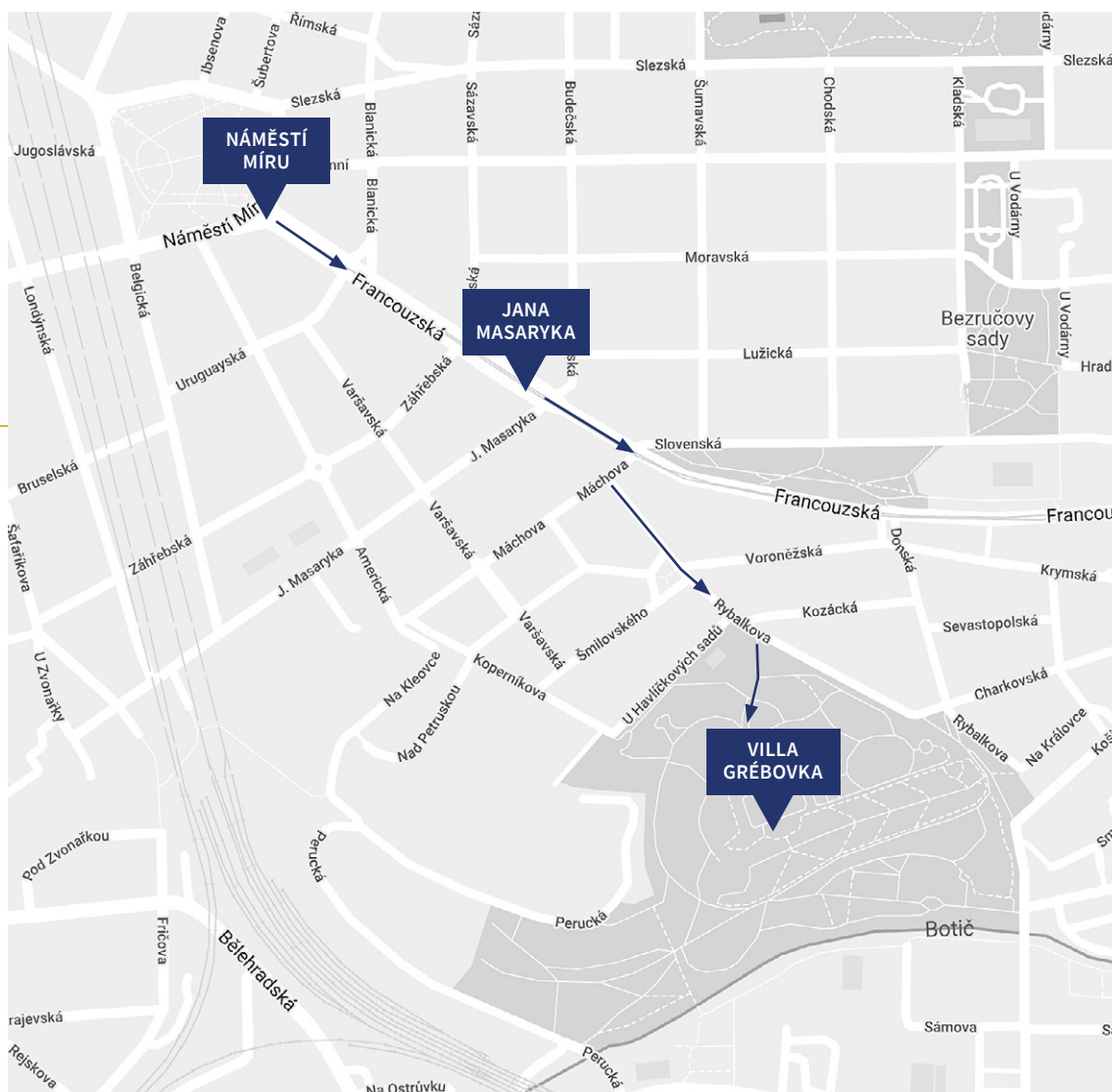


The CEELI Institute

The Villa Grébovka is home to the CEELI Institute, an independent, non-profit organization that provides post-graduate legal education programs. The CEELI Institute occupies the Villa under a long-term lease from the city of Prague 2 and, in return, restored the building to its original splendor.

Today, the Villa is an extraordinary, self-contained training and residential center with lecture halls, classrooms, dining facilities, and accommodations. The Institute hosts more than 75 events per year and has a dedicated facility management staff.





Directions

The Villa Grébovka is located inside the park “Havlíčkovy sady”. The park is within walking distance of Náměstí Míru (metro line A), as well as of the Jana Masaryka and Krymská stops on tram number 22. The main entrance is located at the intersection of Voroněžská and Rybalkova.



Contacts

Residence Manager

Simona Trázníková

Mobile phone: +420 602 677 670

Fixed line: +420 222 520 100

Email: simona.traznikova@ceeli.eu

Assistant Residence Manager

Jindra Erbenová

Mobile phone: +420 776 271 080

Fixed line: +420 222 520 100

Email: jindra.erbenova@ceeli.eu